

SEASAVE for WIN 95/NT V 1.03

1.0 INTRODUCTION.....	2
2.0 INSTALLATION.....	2
3.0 MAJOR DIFFERENCES FROM THE DOS VERSION	2
4.0 DEMO ARCHIVED DATA	3
5.0 SEACON.....	6
6.0 CONFIGURATION MENU.....	6
7.0 SCREEN DISPLAY	7
7.1 MODIFY EXISTING DISPLAY.....	7
7.1.1 OVERLAY (X-Y) DISPLAY	7
7.1.2 FIXED DISPLAY	9
7.1.3 SCROLLED DISPLAY.....	9
8.0 DISPLAY ARCHIVED DATA	10
9.0 ACQUIRE REAL-TIME DATA.....	10
10.0 KNOWN PROBLEMS	11
11.0 FEEDBACK TO SEA-BIRD.....	11

1.0 INTRODUCTION

This version of SEASAVE is a native WIN 95/NT application that includes the functions incorporated in the DOS version of SEACON and SEASAVE. The instrument configuration file format (.CON) and the archived data format are preserved from the DOS version so that existing .CON files can be used without modification and data collected with this Windows version can be post processed with the DOS post processing modules. All of the DOS post processing modules will eventually be converted to WIN 95/NT applications.

2.0 INSTALLATION

FROM FLOPPY DISKS:

Insert Disk 1 into Drive a: and run a:setup.

FROM the SEABIRD FTP site:

Download the file SeasaveWin32V1.03.exe

Select SeasaveWin32V1.03 with Windows Explorer and then double click on SeasaveWin32v1.03.exe to install SEASAVE.

The installation will prompt you for the destination directory for the SEASAVE executable and DLL files. The installation will also create a directory on your c: drive called sbedemo and will copy demo data files to this subdirectory.

3.0 MAJOR DIFFERENCES FROM THE DOS VERSION

Functions performed by SEACON are now part of SEASAVE as a configuration option.

SEASAVE for Win95/NT now supports use of serial ports COM1 through COM10.

Up to 10 displays can be active of the desktop at once. Displays can be added, deleted and modified without interrupting data acquisition.

Each display on the desktop has its own configuration file. Save the file to a new name after modifying the display to build an easily accessed list of pre-configured displays. Configuration files for overlay (X-Y) displays have a .DSO extension, fixed displays have a .DSF extension and scrolled displays have a .DSS extension.

To save the desktop placement of the your configured displays, first make sure that each display file has been saved and then select: "Save Seasave Configuration As" from the File menu. This will save the display locations along with a list of display file names to the selected SEASAVE configuration file.

4.0 DEMO ARCHIVED DATA

Run SEASAVE. The following form should be displayed:

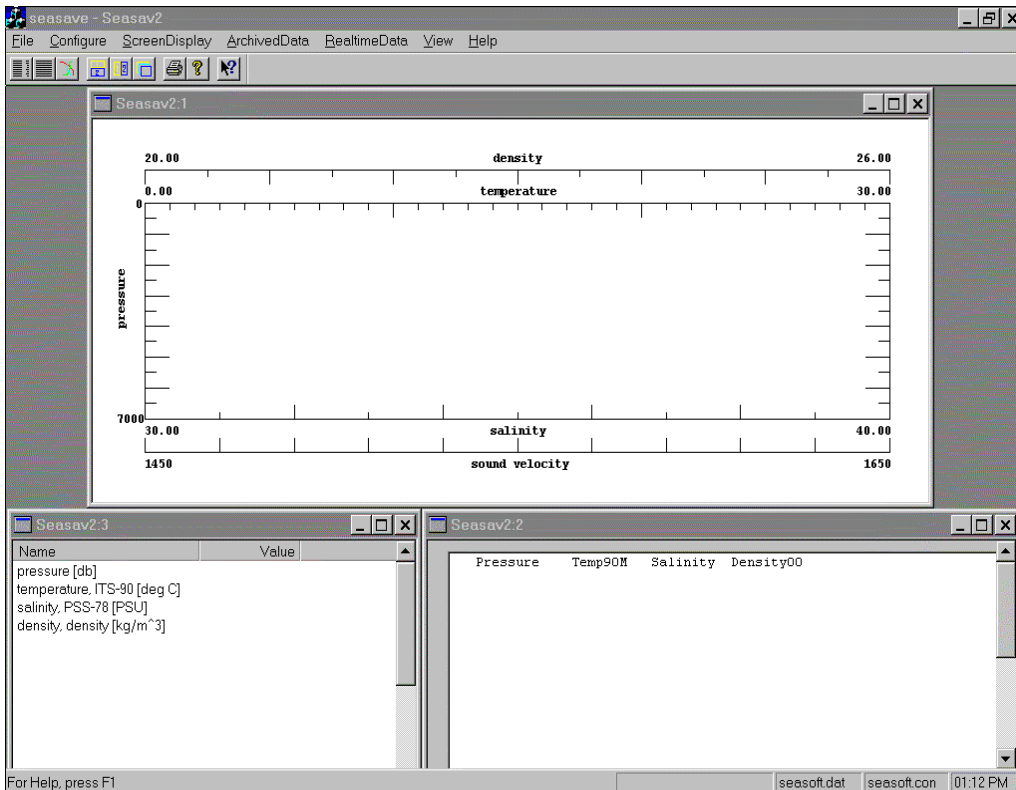
Create a new default .CON file. Use this option if no .CON files exist on your computer.

This runs the new version of SEACON on the selected .CON file

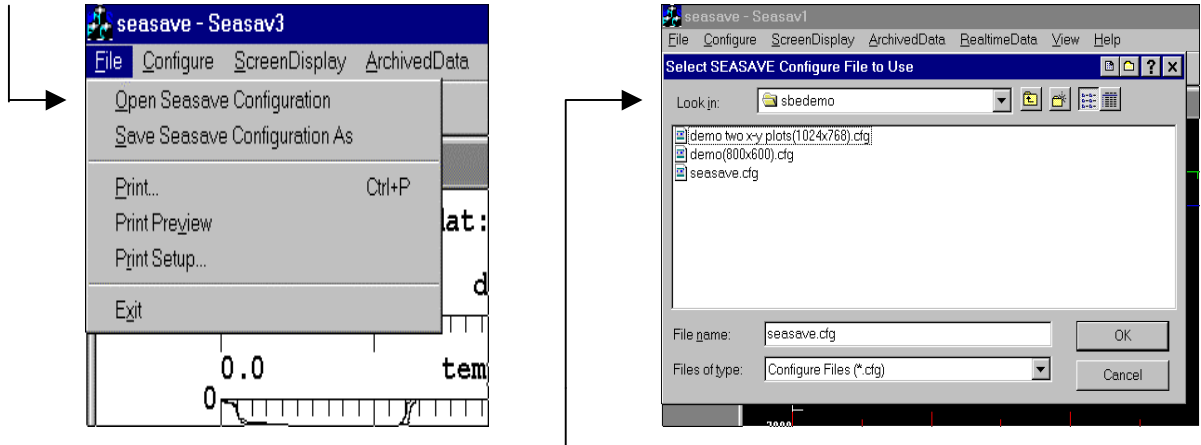
Select among several saved .CON files

Select OK to run SEASAVE with the default .CON file.

The Following default screen configuration will be displayed:

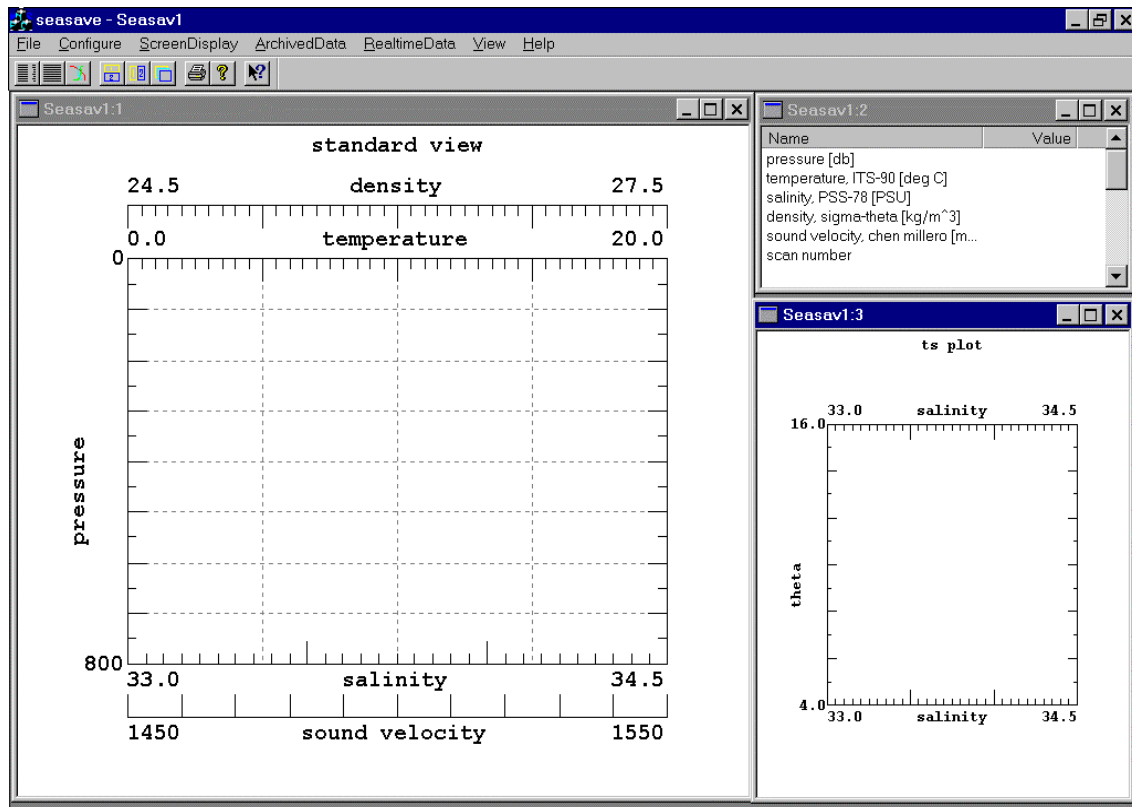


To select a predefined view for the demo data select File; Open SEASAVE Configuration. Look in c:\sbedemo to find the demo .CFG files:

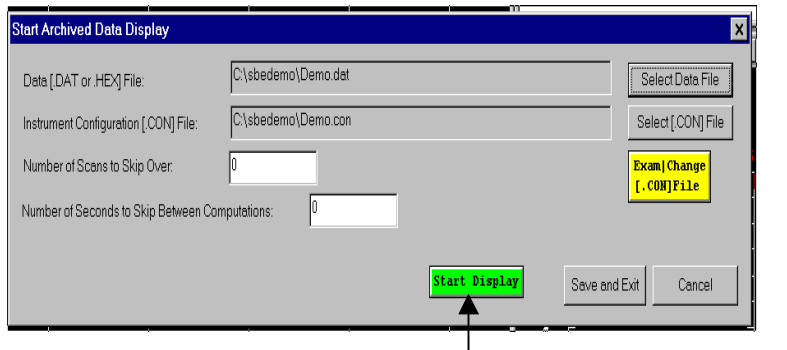


Select the configuration file that matches your screen resolution. If your screen resolution is set to 640x480 you will need to fit the display windows to the screen. Select the 800x600 .CFG file and then select ScreenDisplay, Auto Arrange Display Windows and choose horizontal, vertical, or cascade. Drag and size the display windows to fit the display.

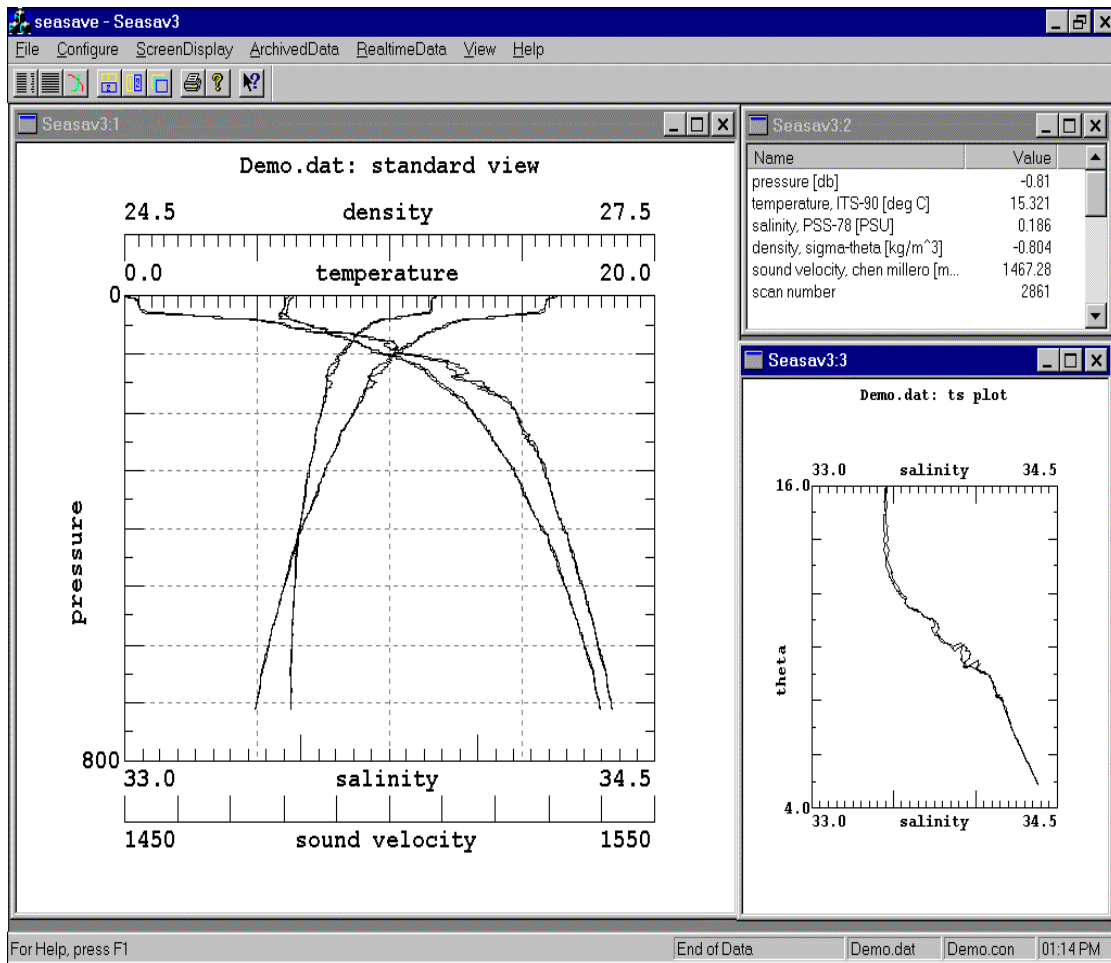
The following should be displayed:



Select Archived Data from the top menu and then select Start Display.

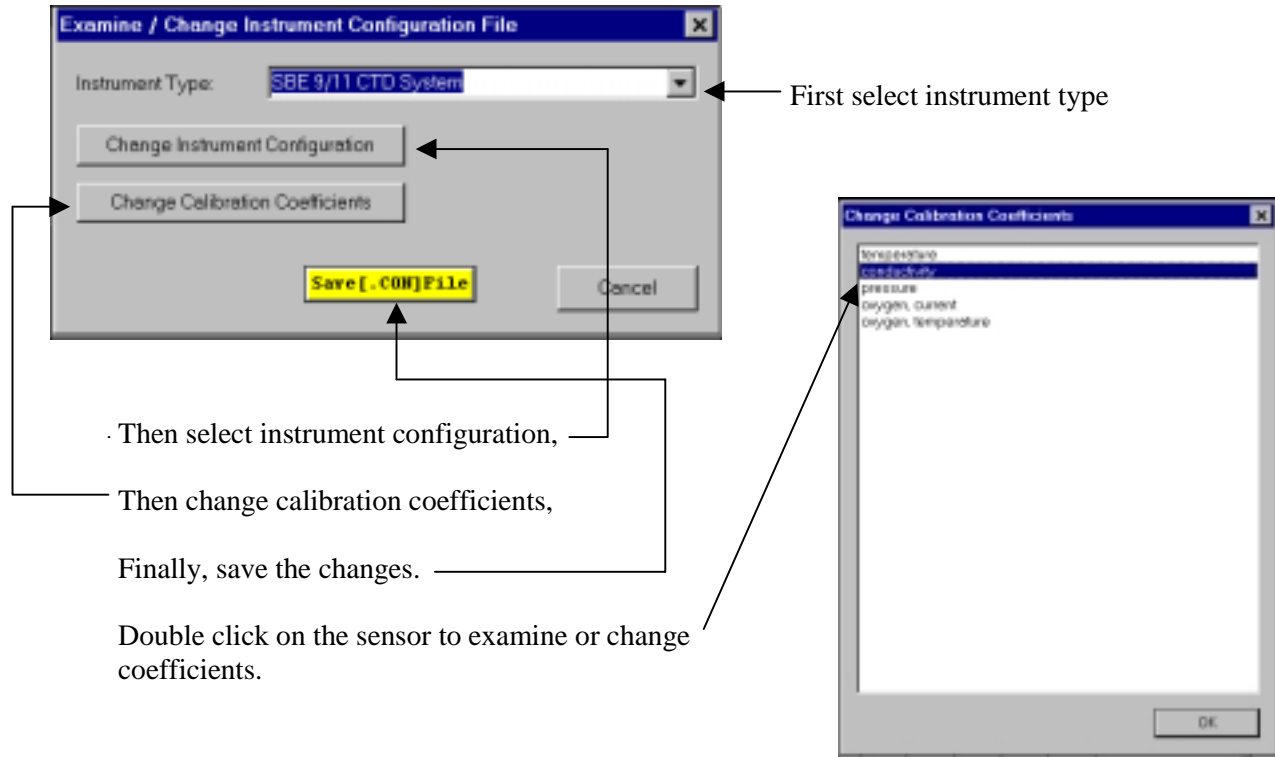


The display of archived demo data should look like:



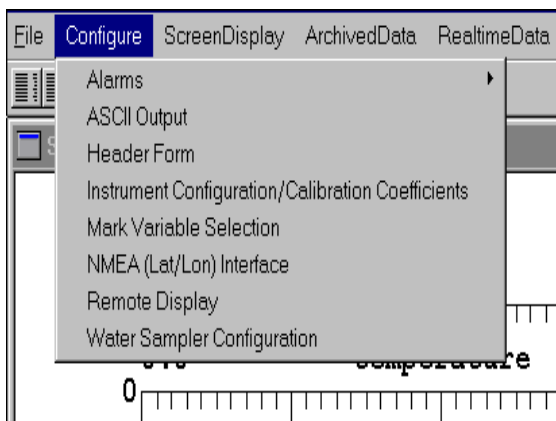
5.0 SEACON

The functions of SEACON are now integrated into SEASAVE. These functions can be accessed in the entry form, from the main Configure menu, and from the Exam | Change selections in both the Archived Data and Real-Time Data menus. Instrument configuration forms are the same as in the DOS version of SEACON. To examine or change the calibration coefficients for a sensor, double click on the sensor.



6.0 CONFIGURATION MENU

Most configuration settings have been moved to the main configuration menu:

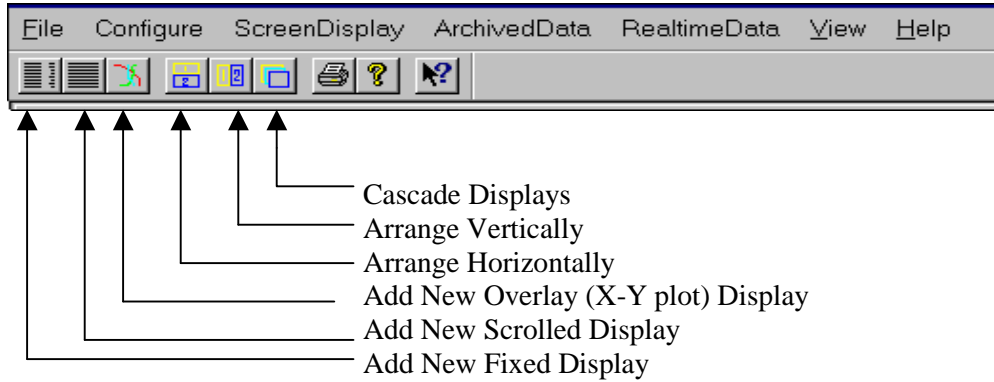


Verify the settings in each configure submenu before collecting real-time data.

The configuration settings are saved when SEASAVE is exited by selecting File and then Exit from the main menu or by selecting Save or Save As from File on the main menu.

7.0 SCREEN DISPLAY

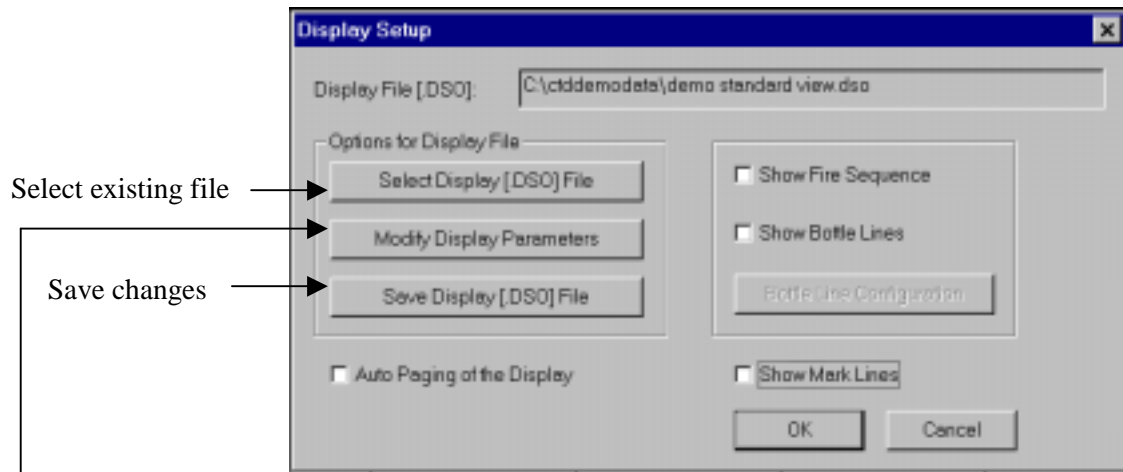
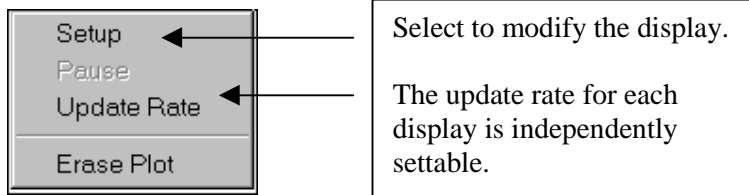
Use the Screen Display main menu option or the toolbar icons to add and arrange displays:



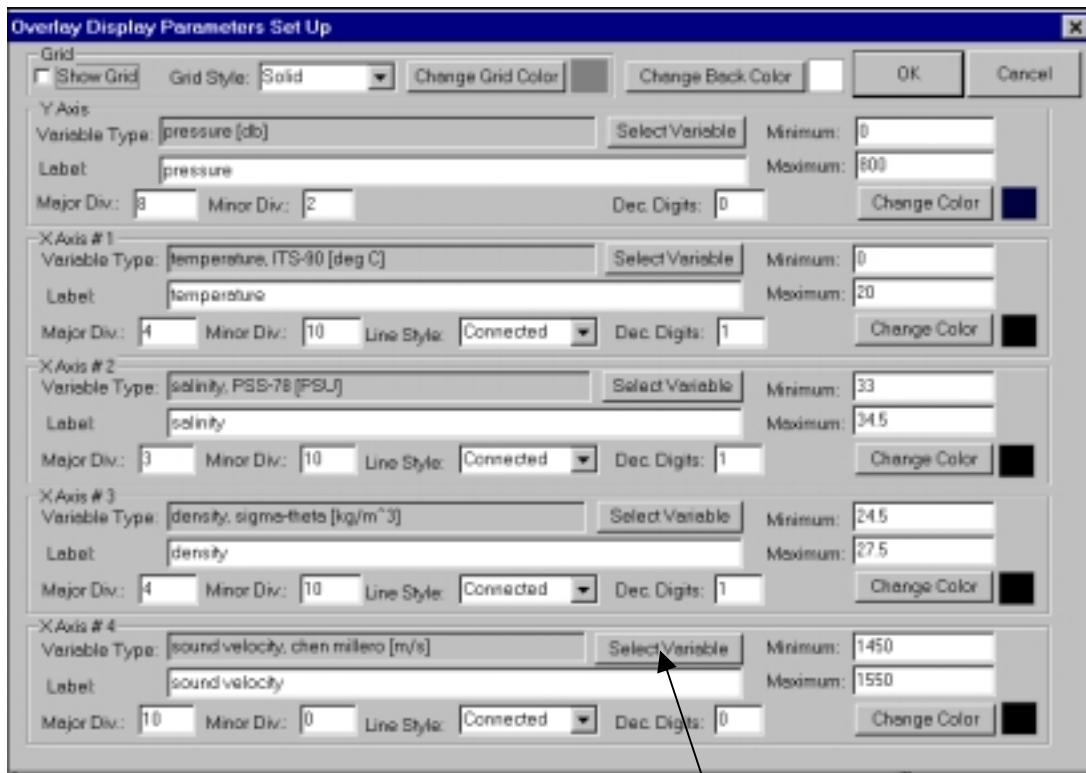
7.1 MODIFY EXISTING DISPLAY

First select the display by clicking in the display, then either select Edit Selected Display Window from the main ScreenDisplay menu or right click on the selected display:

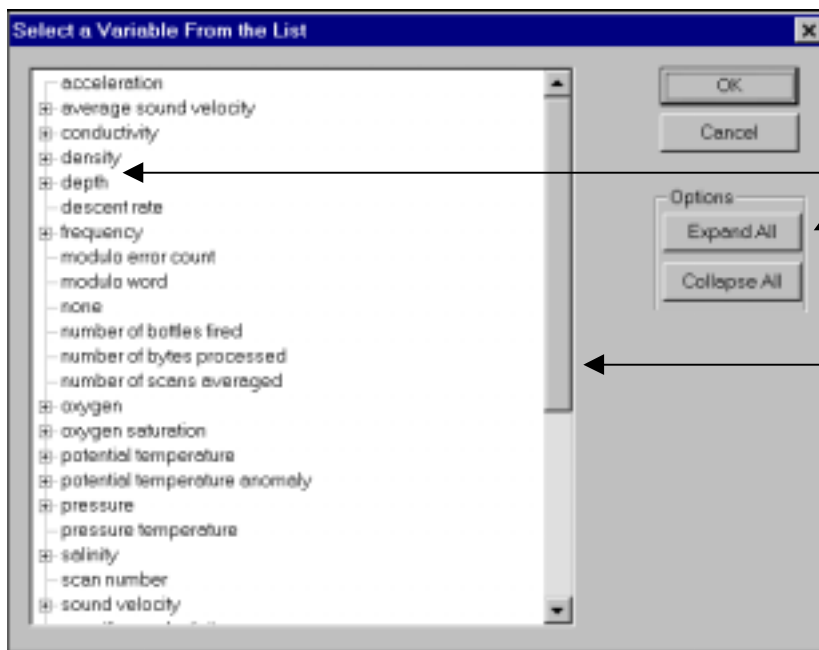
7.1.1 OVERLAY (X-Y) DISPLAY



Select to modify the display, the following form will be displayed:



Click on the Select Variable button to select the variable type — from the following form:

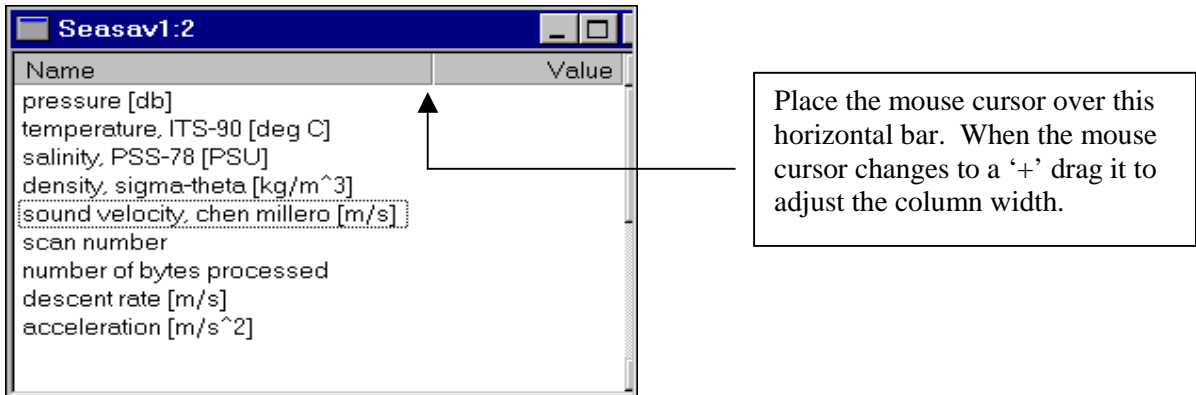
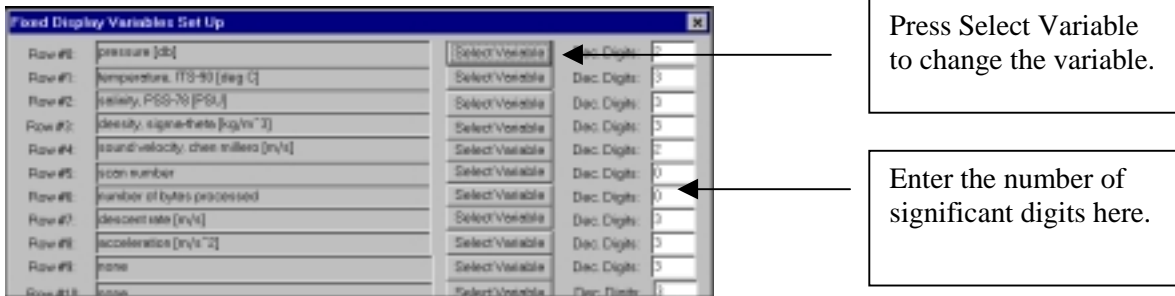
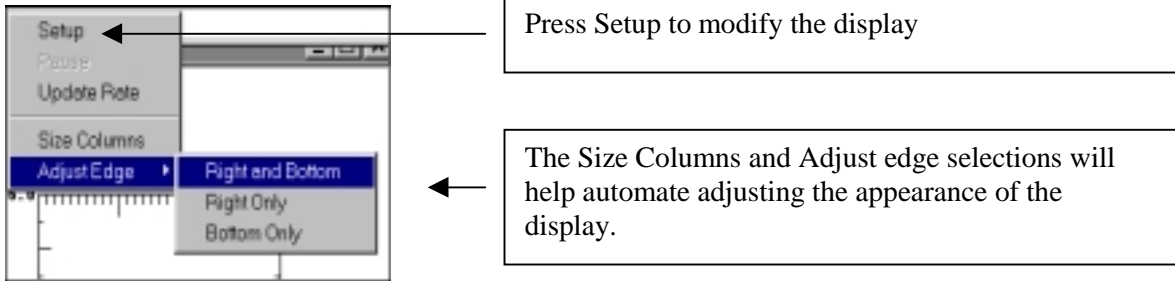


Click on the variables with a '+' character to see the secondary selections or select Expand all to see all of the selections.

Use the scroll bar or arrow buttons to move through the list.

7.1.2 FIXED DISPLAY

The Fixed display set up menu is:

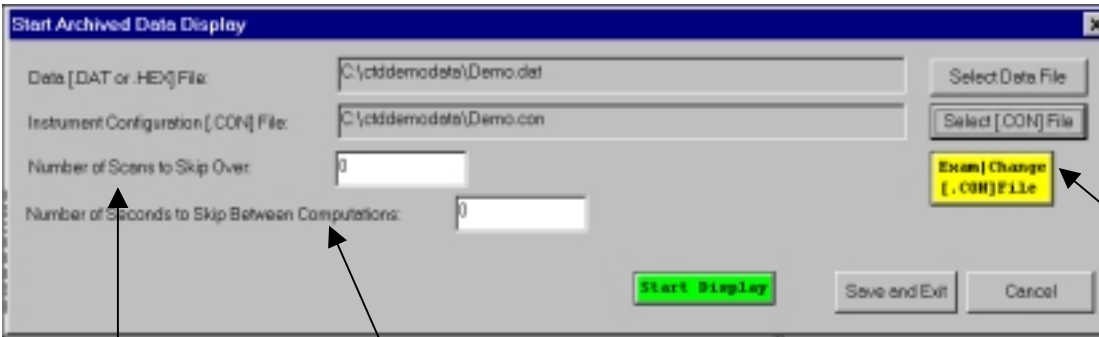


7.1.3 SCROLLED DISPLAY

Scrolled Display selection is similar to fixed display selection.

8.0 DISPLAY ARCHIVED DATA

The archived data setup form is:



The screenshot shows the 'Start Archived Data Display' dialog box. It contains the following fields and buttons:

- Data [DAT or HEX] File: C:\ctddemodata\Demo.dat
- Instrument Configuration [CON] File: C:\ctddemodata\Demo.con
- Number of Scans to Skip Over: 0
- Number of Seconds to Skip Between Computations: 0
- Buttons: Select Data File, Select [CON] File, Exam | Change [CON] File, Start Display, Save and Exit, Cancel.

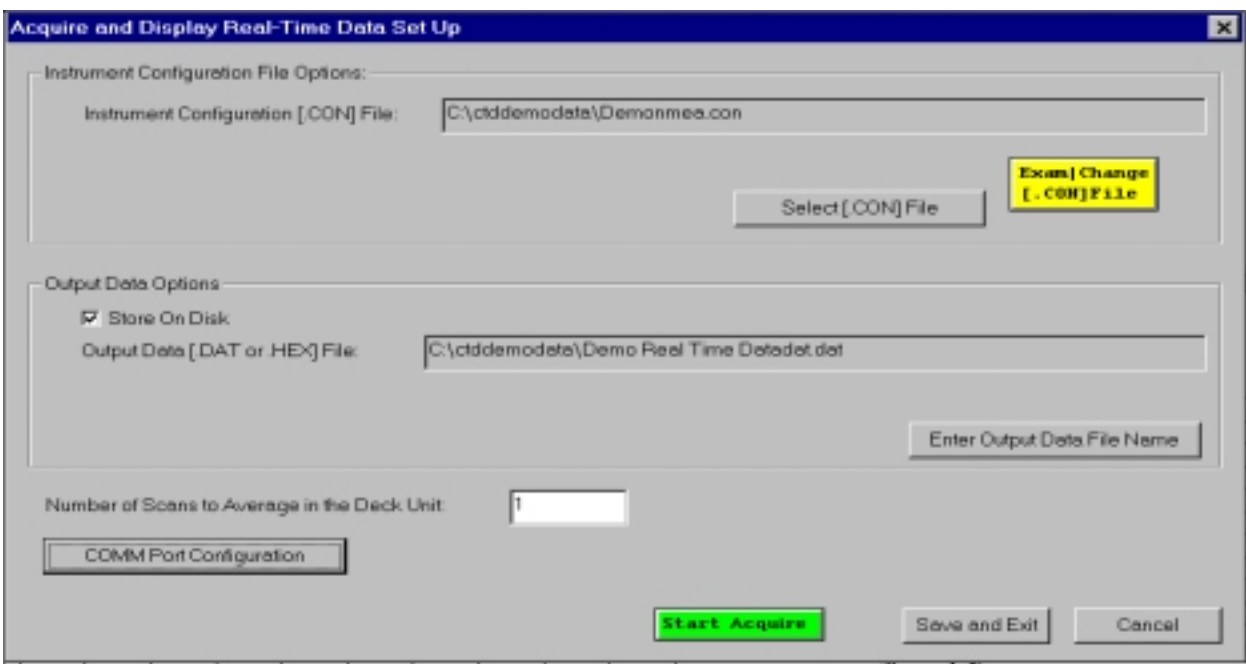
Callouts provide the following explanations:

- Number of Scans to Skip Over:** Skips over scans from beginning of data file.
- Number of Seconds to Skip Between Computations:** Seconds are computed from the interval between scans. If the data rate is 24 scans per second and the number of seconds to skip is set to 1, then a data point will be computed (and plotted) every 24 scans. Setting this value to 0 will cause every scan to be computed.
- Exam | Change [CON] File:** Select .CON file and /or activate Configure menus to examine or change configuration.

When displaying archived data the above setting sets the minimum number of seconds between updates. Each display also has an update rate setting. If the display update rate setting is more frequent than 'number of seconds to skip between computations' then the display will be updated each time data is computed otherwise the display will be updated at the rate selected.

9.0 ACQUIRE REAL-TIME DATA

The real-time data setup form is:



The screenshot shows the 'Acquire and Display Real-Time Data Set Up' dialog box. It contains the following fields and buttons:

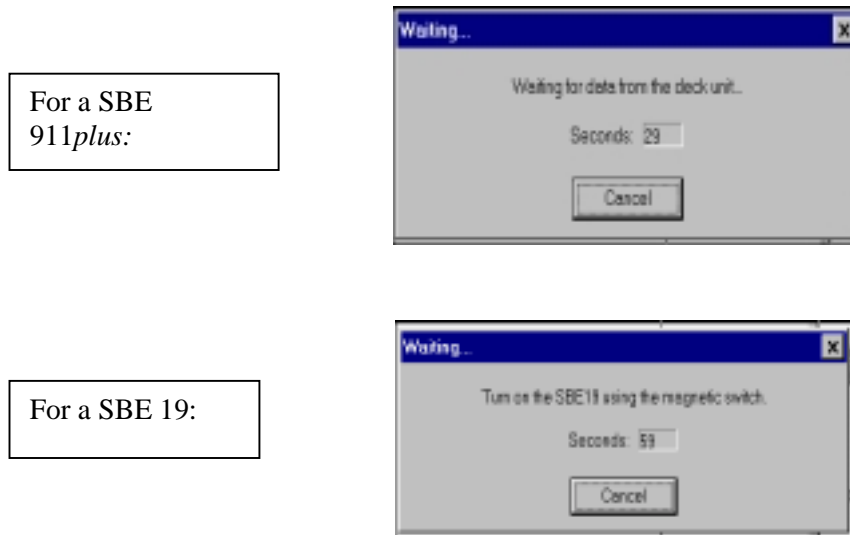
- Instrument Configuration File Options:
 - Instrument Configuration [CON] File: C:\ctddemodata\Demo\mea.con
 - Buttons: Select [CON] File, Exam | Change [CON] File
- Output Data Options:
 - Store On Disk
 - Output Data [DAT or HEX] File: C:\ctddemodata\Demo Real Time Data\dat.dat
 - Button: Enter Output Data File Name
- Number of Scans to Average in the Deck Unit: 1
- Button: COMM Port Configuration
- Buttons: Start Acquire, Save and Exit, Cancel

Review all the submenus under the main Configuration menu.

If you are storing data on disk verify that the Store on Disk check box is checked and that the output filename and .CON file are correct.

Select COMM Port Configuration to set up the COMM port configuration.

Press Start Acquire to start data acquisition. A message similar to the following will appear:



If data is not being acquired and the waiting message is not displayed try exiting SEASAVE and closing any open DOS applications that may be running.

10.0 KNOWN PROBLEMS

The DOS based terminal programs (TERM19, TERM25, etc. will not run when the Windows version of SEASAVE is running. SEASAVE real-time acquisition may not run if a DOS window that was running one of the DOS based terminal programs is open.

11.0 FEEDBACK to SEA-BIRD

If you discover a reproducible 'bug' please document the steps required to create the problem and send a report via e-mail to jbackes@seabird.com or by FAX to John Backes at Sea-Bird. The FAX number is (425) 642-9866.

We also welcome suggestions for new features and enhancements.